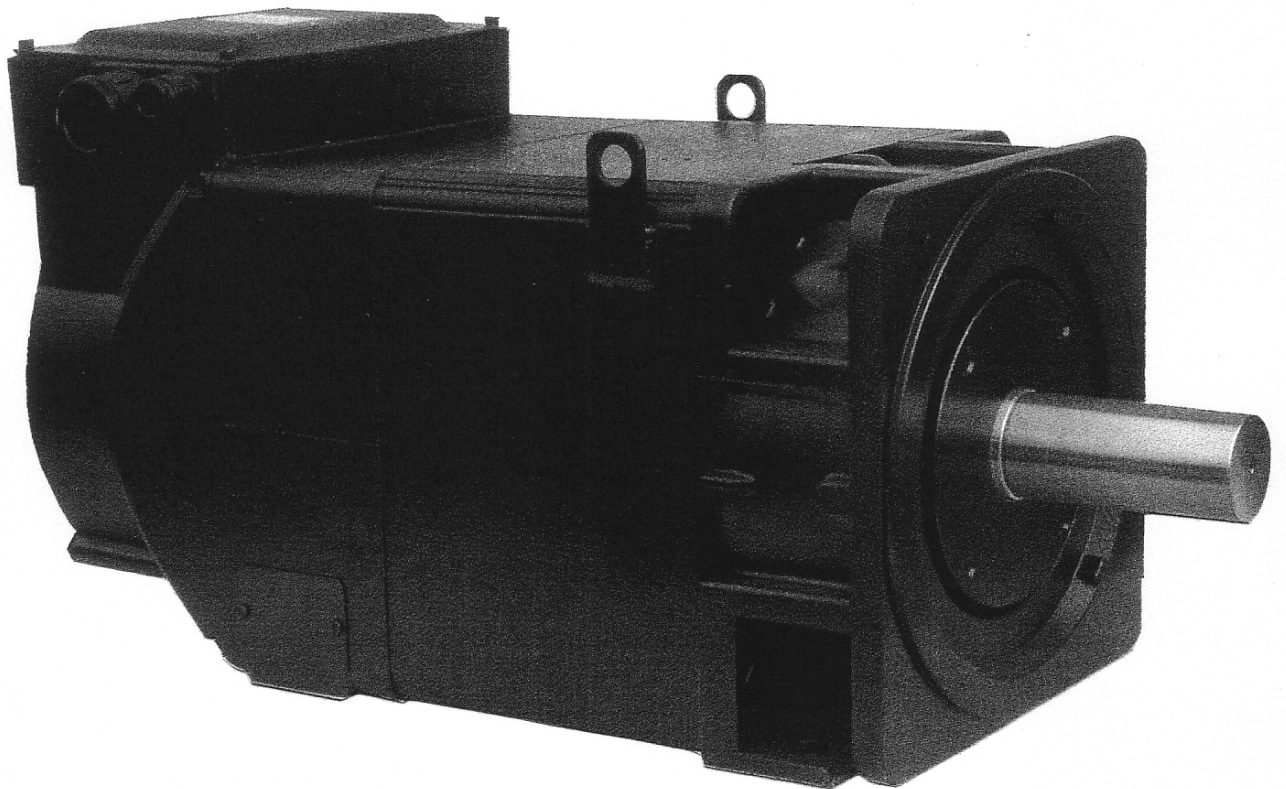


Drehstrommotoren für Umrichterbetrieb

Baureihe CAX



Consysta Automation GmbH
contraves drives
Am Sägewerk 23a
D-55124 Mainz-Gonsenheim

Telefon: 06131-9469 0 Fax: 06131-9469 13 Internet: www.contraves-drives.com

Consysta Automation GmbH
 D-55124 Mainz-Gonsenheim · Am Sägewerk 23a
 Tel. (06131) 94 69-0 · Fax (06131) 94 69-13

CAX 63 4-polig

DATI GENERALI - GENERAL DATA

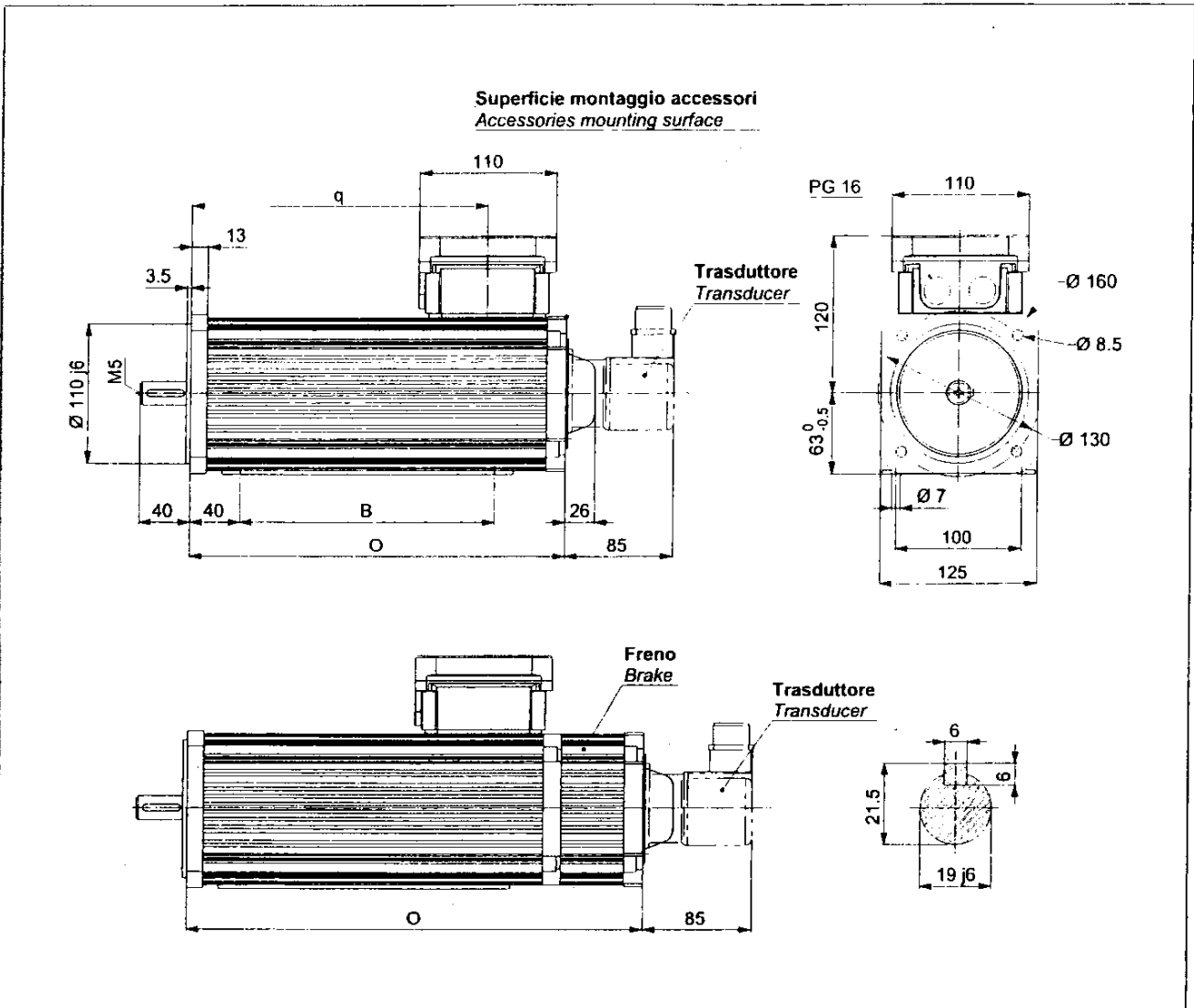
Forma costruttiva - Mounting	B5 - B3/B5 su richiesta B3/B5 on request	Isolamento - Insulation	Classe F - Class F
Equilibratura - Balancing	grado R - R degree (ISO 2373)	Raffreddamento - Cooling system	Vent. assiale forz. - Forced air cooled
Protezione - Protection	IP54	T. amb./Altitud. - Amb. temp./Altitud.	0 - 40°C/1000m SLM - 1000m AS
Protezione termica - Thermal prot.	Klixon NC (250V - 2.5A)	Trasduttore - Transducer	Encoder o Resolver - Encoder or Resolver

DATI TECNICI - TECHNICAL DATA

	SERVIZIO S1 - DUTY S1								SERV. S6/40% - DUTY S6/40%						
	VELOCITA' NOMINALE RATED SPEED	COPIA NOMINALE RATED TORQUE	POTENZA NOMINALE RATED POWER	TENSIONE NOMINALE COD.38 RATED VOLTAGE COD.38	CORRENTE NOMINALE COD.38 RATED CURRENT COD.38	TENSIONE NOMINALE COD.33 RATED VOLTAGE COD.33	CORRENTE NOMINALE COD.33 RATED CURRENT COD.33	VELOCITA' MASSIMA A POTENZA COSTANTE MAXIMUM SPEED AT CONSTANT POWER	COPIA NOMINALE RATED TORQUE	POTENZA NOMINALE RATED POWER	CORRENTE NOMINALE COD.38 RATED CURRENT COD.38	CORRENTE NOMINALE COD.33 RATED CURRENT COD.33	VELOCITA' MASSIMA A POTENZA COSTANTE MAXIMUM SPEED AT CONSTANT POWER	INERZIA ROTORE ROTOR INERTIA	VELOCITA' MASSIMA ASSOLUTA ABSOLUTE MAXIMUM SPEED
	RPM	Nm	KW	V	A	V	A	RPM	Nm	KW	A	A	RPM	Kgm ²	RPM
63.1C	1000	2.60	0.27	380	0.9	330	1.0	2500	3.66	0.38	1.3	1.5	2000	0.0017	9500
	1500	2.55	0.40	380	1.3	330	1.5	3000	3.57	0.55	1.8	2.1	2500	0.0017	9500
	2000	2.50	0.50	380	1.8	330	2.1	4000	3.50	0.73	2.6	3.0	3500	0.0017	9500
	3000	2.40	0.75	380	2.6	330	3.0	5500	3.20	1.00	3.5	3.8	4500	0.0017	9500
	4000	2.10	0.90	380	3.3	330	3.8	7500	2.95	1.25	4.6	5.3	6000	0.0017	9500
63.2C	1000	4.80	0.50	380	1.7	330	1.9	2500	6.70	0.70	2.3	2.7	2000	0.0020	9500
	1500	4.80	0.75	380	2.5	325	2.9	3000	6.70	1.05	3.5	4.1	2500	0.0020	9500
	2000	4.80	1.00	380	3.3	330	3.8	4000	6.70	1.40	4.6	5.3	3500	0.0020	9500
	3020	4.50	1.41	380	4.9	325	5.7	5500	6.30	2.00	6.9	8.1	4500	0.0020	9500
	4000	3.90	1.63	380	6.4	320	7.6	7500	5.44	2.25	8.8	10.5	6000	0.0020	9500

Consysta Automation GmbH
 D-55124 Mainz-Gonsenheim · Am Sägewerk 23a
 Tel. (0 61 31) 94 69-0 · Fax (0 61 31) 94 69-13

CAX 63 4-polig



Motore - Motor	q	B	VERSIONE NORMALE STANDARD VERSION		VERSIONE CON FRENO VERSION WITH BRAKE	
			O	Peso Kg	O	Peso Kg
63.1C	133	100	196	11	250	13
63.2C	208	175	271	15	325	17

FRENO - BRAKE			Tipo 06	Tipo 08
Coppia statica	Static torque	[Nm]	4	8
Momento d'inerzia	Moment of inertia	[Kgcm ²]	0.13	0.45
Massima velocità di frenatura	Maximum braking speed	rpm	3,000	3,000
Massima velocità assoluta	Absolute maximum speed	rpm	12,400	12,400
Potenza assorbita	Input power	[W]	20	25
Alimentazione	Power supply	[VDC]	24	24

CUSCINETTI - BEARINGS			
		Cuscinetto a sfere Ball bearing	Cuscinetto a rulli Roller bearing
Lato comando	Drive end	6204 2Z C3	-
Lato opposto comando	Opposite drive end	6203 2Z C3	-

Consysta Automation GmbH
 D-55124 Mainz-Gonsenheim · Am Sägewerk 23a
 Tel. (0 61 31) 94 69-0 · Fax (0 61 31) 94 69-13

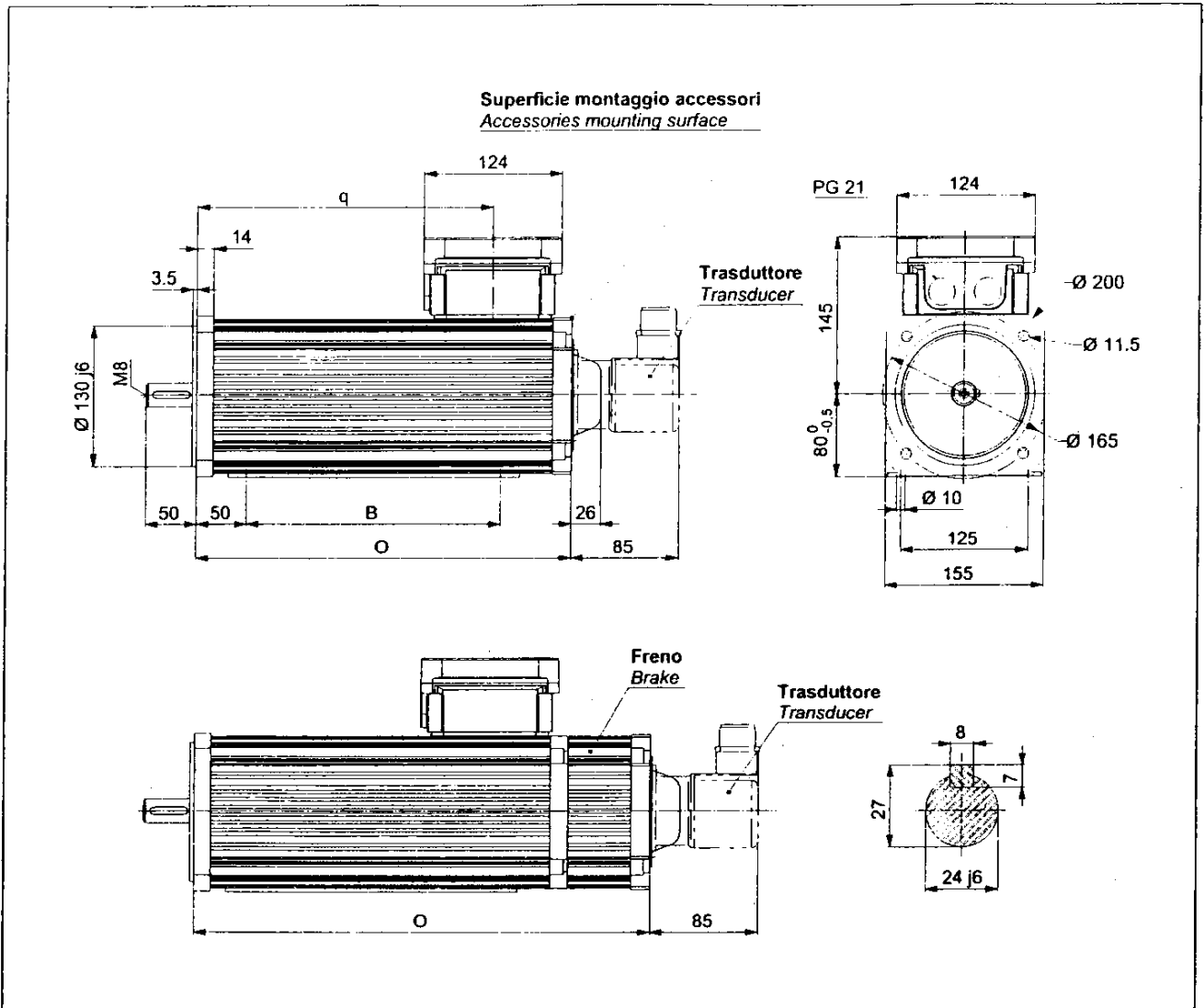
CAX 80 4-polig

DATI GENERALI - GENERAL DATA			
Forma costruttiva - Mounting	B5 - B3/B5 su richiesta B3/B5 on request	Isolamento - Insulation	Classe F - Class F
Equilibratura - Balancing	grado R - R degree (ISO 2373)	Raffreddamento - Cooling system	Vent. assiale forz. - Forced air cooled
Protezione - Protection	IP54	T. amb./Altitud. - Amb. temp./Altitud.	0 - 40°C/1000m SLM - 1000m AS
Protezione termica - Thermal prot.	Klixon NC (250V - 2.5A)	Trasduttore - Transducer	Encoder o Resolver - Encoder or Resolver

DATI TECNICI - TECHNICAL DATA															
	SERVIZIO S1 - DUTY S1								SERV. S6/40% - DUTY S6/40%						
	VELOCITA' NOMINALE RATED SPEED	COPPIA NOMINALE RATED TORQUE	POTENZA NOMINALE RATED POWER	TENSIONE NOMINALE COD.38 RATED VOLTAGE COD.38	CORRENTE NOMINALE COD.38 RATED CURRENT COD.38	TENSIONE NOMINALE COD.33 RATED VOLTAGE COD.33	CORRENTE NOMINALE COD.33 RATED CURRENT COD.33	VELOCITA' MASSIMA A POTENZA CONSTANTE MAXIMUM SPEED AT CONSTANT POWER	COPPIA NOMINALE RATED TORQUE	POTENZA NOMINALE RATED POWER	CORRENTE NOMINALE COD.38 RATED CURRENT COD.38	CORRENTE NOMINALE COD.33 RATED CURRENT COD.33	VELOCITA' MASSIMA A POTENZA CONSTANTE MAXIMUM SPEED AT CONSTANT POWER	INERZIA ROTORE ROTOR INERTIA	VELOCITA' MASSIMA ASSOLUTA ABSOLUTE MAXIMUM SPEED
	RPM	Nm	KW	V	A	V	A	RPM	Nm	KW	A	A	RPM	Kgm ²	RPM
80.1C	1000	7.0	0.73	380	1.8	330	2.1	2500	9.5	1.00	2.5	2.9	1200	0.0029	9000
	1500	7.0	1.10	380	2.7	330	3.1	3000	9.5	1.50	3.7	4.2	1800	0.0029	9000
	2000	7.0	1.40	380	3.7	325	4.3	3800	9.5	2.00	5.3	6.3	2500	0.0029	9000
	3000	6.4	2.00	380	5.1	325	6.0	4800	8.9	2.80	7.1	8.3	3500	0.0029	9000
	4000	5.9	2.45	380	6.8	325	8.0	5000	8.2	3.40	9.4	11.0	4500	0.0029	9000
80.2C	1000	9.6	1.00	380	2.5	330	2.9	2700	13.4	1.40	3.4	3.9	1400	0.0029	9000
	1500	9.6	1.50	380	3.7	330	4.2	3200	13.4	2.00	4.8	5.5	2000	0.0029	9000
	2000	9.6	2.00	380	5.0	325	5.8	4000	13.0	2.70	6.6	7.7	2700	0.0029	9000
	3000	8.7	2.70	380	7.2	325	8.4	5000	11.8	3.70	9.8	11.5	3700	0.0029	9000
	4000	8.1	3.40	380	9.2	330	10.6	5500	11.0	4.60	12.4	14.3	4600	0.0029	9000
80.3C	1000	13.4	1.40	380	3.2	330	3.7	2800	18.0	1.9	4.4	4.4	1500	0.0029	9000
	1500	13.4	2.10	380	4.9	325	5.6	3300	18.0	2.8	6.5	6.5	2200	0.0029	9000
	2000	13.4	2.80	380	6.6	340	7.6	4200	18.0	3.8	8.8	8.8	2800	0.0029	9000
	2950	12.1	3.80	380	9.3	325	10.7	5000	17.0	5.3	12.8	12.8	3800	0.0029	9000
	4140	11.6	5.00	380	12.8	340	13.9	6000	15.8	6.8	16.5	16.5	4800	0.0029	9000

Consysta Automation GmbH
 D-55124 Mainz-Gonsenheim · Am Sagewerk 23a
 Tel. (0 61 31) 94 69-0 · Fax (0 61 31) 94 69-13

CAX 80 4-polig



Motore - Motor	q	B	VERSIONE NORMALE STANDARD VERSION		VERSIONE CON FRENO VERSION WITH BRAKE	
			O	Peso Kg	O	Peso Kg
80.1C	145	100	235	14	289	17
80.2C	190	145	280	16	334	19
80.3C	270	215	350	22	404	24

FRENO - BRAKE			Tipo 08	Tipo 10
Coppia statica	Static torque	[Nm]	8	16
Momento d'inerzia	Moment of inertia	[Kgcm ²]	0.45	1.6
Massima velocità di frenatura	Maximum braking speed	rpm	3,000	3,000
Massima velocità assoluta	Absolute maximum speed	rpm	12,400	8,300
Potenza assorbita	Input power	[W]	25	30
Alimentazione	Power supply	[VDC]	24	24

CUSCINETTI - BEARINGS			
		Cuscinetto a sfere Ball bearing	Cuscinetto a rulli Roller bearing
Lato comando	Drive end	6205 2Z C3	-
Lato opposto comando	Opposite drive end	6204 2Z C3	-

Consysta Automation GmbH
 D-55124 Mainz-Gonsenheim · Am Sägewerk 23a
 Tel. (0 61 31) 94 69-0 · Fax (0 61 31) 94 69-13

CAX 100 K 4-polig

DATI GENERALI - GENERAL DATA

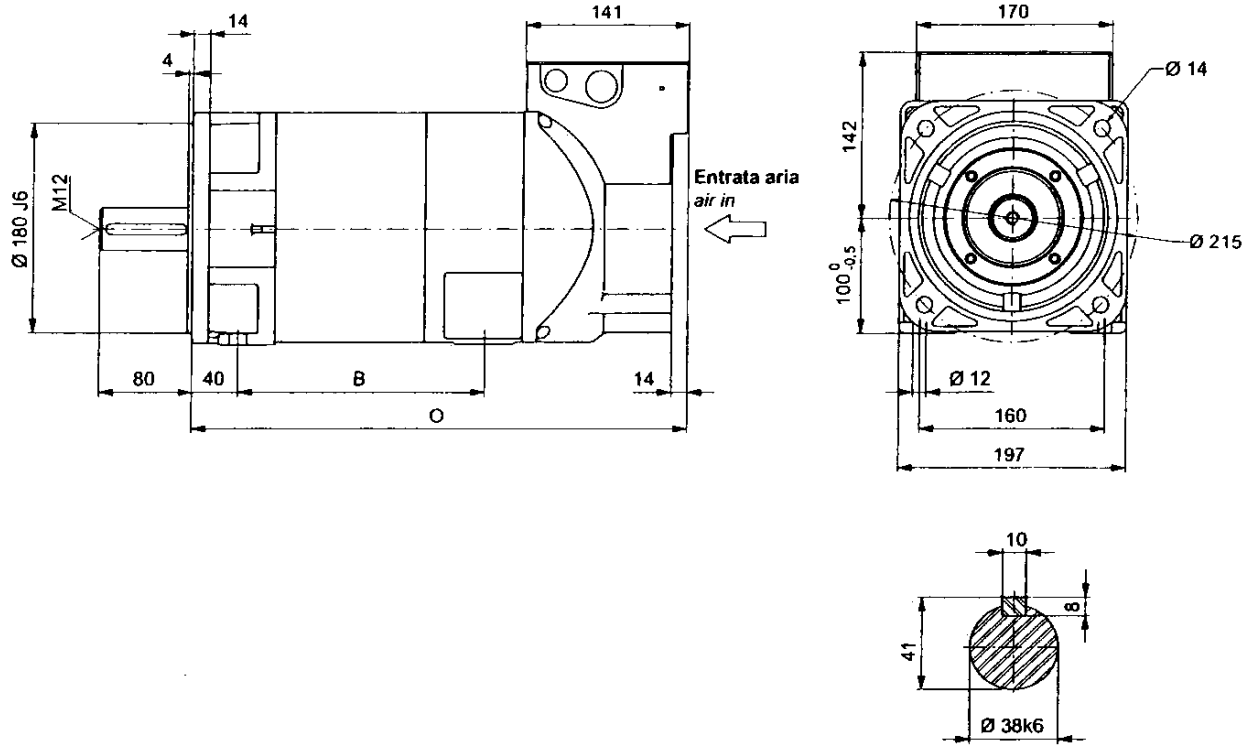
Forma costruttiva - Mounting	B3 - B3/B5 su richiesta B3/B5 on request	Isolamento - Insulation	Classe F - Class F
Equilibratura - Balancing	grado R - R degree (ISO 2373)	Raffreddamento - Cooling system	Vent. assiale forz. - Forced air cooled
Protezione - Protection	IP54	T. amb./Altitud. - Amb. temp./Altitud.	0 - 40°C/1000m SLM - 1000m AS
Protezione termica - Thermal prot.	Klixon NC (250V - 2.5A)	Trasduttore - Transducer	Encoder o Resolver - Encoder or Resolver

DATI TECNICI - TECHNICAL DATA

	SERVIZIO S1 - DUTY S1								SERV. S6/40% - DUTY S6/40%						
	VELOCITA' NOMINALE RATED SPEED	COPPIA NOMINALE RATED TORQUE	POTENZA NOMINALE RATED POWER	TENSIONE NOMINALE COD.38 RATED VOLTAGE COD.38	CORRENTE NOMINALE COD.38 RATED CURRENT COD.38	TENSIONE NOMINALE COD.33 RATED VOLTAGE COD.33	CORRENTE NOMINALE COD.33 RATED CURRENT COD.33	VELOCITA' MASSIMA A POTENZA COSTANTE MAXIMUM SPEED AT CONSTANT POWER	COPPIA NOMINALE RATED TORQUE	POTENZA NOMINALE RATED POWER	CORRENTE NOMINALE COD.38 RATED CURRENT COD.38	CORRENTE NOMINALE COD.33 RATED CURRENT COD.33	VELOCITA' MASSIMA A POTENZA COSTANTE MAXIMUM SPEED AT CONSTANT POWER	INERZIA ROTORE ROTOR INERTIA	VELOCITA' MASSIMA ASSOLUTA ABSOLUTE MAXIMUM SPEED
	RPM	Nm	KW	V	A	V	A	RPM	Nm	KW	A	A	RPM	Kgm ²	RPM
100K.1	1010	19.0	2.0	380	5.0	330	5.7	1700	26.5	2.8	7.0	8.0	1200	0.0062	9000
	1520	19.0	3.0	380	7.0	335	8.1	2700	26.5	4.2	9.8	11.3	1600	0.0062	9000
	2070	19.0	4.1	380	9.5	330	10.8	3500	26.5	5.7	13.3	15.1	2400	0.0062	9000
	3040	15.7	5.0	380	11.7	330	13.4	4300	25.0	7.0	16.4	18.8	3300	0.0062	9000
	4000	14.3	6.0	380	14.2	340	16.0	5300	20.1	8.4	19.9	22.4	4300	0.0062	9000
100K.2	1020	26.2	2.8	380	6.5	330	7.5	2000	36.7	3.9	9.1	10.5	1250	0.0075	9000
	1510	25.3	4.0	380	9.3	320	11.0	3200	35.4	5.6	13.0	15.4	1900	0.0075	9000
	2130	25.1	5.6	380	12.8	330	14.8	4100	35.2	7.8	17.9	20.7	2600	0.0075	9000
	3080	21.1	6.8	380	15.4	335	17.4	4600	29.5	9.5	21.6	24.4	3200	0.0075	9000
	4140	19.4	8.4	380	19.5	320	23.0	5600	27.1	11.8	27.3	32.2	4200	0.0075	9000
100K.3	1020	35.6	3.8	380	8.8	335	9.8	2300	49.8	5.3	12.3	13.7	1300	0.0102	9000
	1550	34.5	5.6	380	12.6	330	14.7	3500	48.3	7.8	17.6	20.6	2300	0.0102	9000
	2120	34.2	7.6	380	17.0	335	19.4	4000	48.0	10.6	23.8	27.2	2800	0.0102	9000
	3170	28.9	9.6	380	21.5	350	23.5	5000	40.5	13.4	30.1	32.9	3800	0.0102	9000
	4390	26.1	12.0	380	26.6	340	30.1	6000	36.6	16.8	37.2	42.1	4500	0.0102	9000
100K.4	1110	47.4	5.5	380	12.5	330	14.7	2300	66.4	7.7	17.5	20.6	1700	0.0142	9000
	1510	47.4	7.5	380	17.0	335	19.2	3400	66.4	10.5	23.8	26.9	2700	0.0142	9000
	2180	46.0	10.5	380	23.0	350	25.3	4600	64.4	14.7	32.2	35.4	3200	0.0142	9000
	3090	39.6	12.8	380	28.4	340	32.0	5600	55.4	17.9	39.8	44.8	4200	0.0142	9000
	4100	36.1	15.5	380	36.5	350	39.6	6000	50.6	21.7	51.1	55.4	5000	0.0142	9000
100K.5	1110	57.7	6.7	380	15.0	340	17.0	2500	80.7	9.4	21.0	23.8	1700	0.0168	9000
	1510	57.0	9.0	380	20.2	325	23.5	4000	80.0	12.6	28.3	32.9	2800	0.0168	9000
	2140	57.0	12.8	380	27.9	340	31.2	5000	80.0	17.9	39.1	43.7	3400	0.0168	9000
	3030	47.3	15.0	380	32.5	320	38.0	5800	66.2	21.0	45.5	53.2	4400	0.0168	9000
	4020	42.8	18.0	380	39.5	340	44.0	6200	60.0	25.2	55.3	61.6	5000	0.0168	9000
100K.6	1110	71.4	8.3	380	18.5	305	23.2	2500	100.0	11.6	25.9	32.9	1700	0.0198	9000
	1590	69.1	11.5	380	25.0	345	27.6	4100	96.7	16.1	35.0	38.6	2800	0.0198	9000
	1975	67.7	14.0	380	30.5	340	34.3	4900	94.8	19.6	42.7	48.0	3400	0.0198	9000
	2985	57.6	18.0	380	39.0	345	43.0	5800	80.6	25.2	54.6	60.2	4400	0.0198	9000
	3720	51.3	20.0	380	44.0	340	49.5	6000	71.9	28.0	62.0	69.3	500	0.0198	9000

Consysta Automation GmbH
 D-55124 Mainz-Gonsenheim · Am Sägewerk 23a
 Tel. (0 61 31) 94 69-0 · Fax (0 61 31) 94 69-13

CAX 100 K 4-polig



Motore - Motor	B	O	Peso Kg
100K.1	154	370	30
100K.2	179	395	36
100K.3	214	430	44
100K.4	264	480	56
100K.5	304	520	65
100K.6	349	565	76

CUSCINETTI - BEARINGS			
		Cuscinetto a sfere Ball bearing	Cuscinetto a rulli Roller bearing
Lato comando	Drive end	6208 2Z C3	-
Lato opposto comando	Opposite drive end	6207 2Z C3	-

VENTILATORE TRIFASE - THREE PHASE FAN			
Alimentazione	Supply	[V]	3X 230Δ/400Y
Frequenza	Frequency	[HZ]	50 60
Corrente	Current	[A]	0.19/0.11 0.19/0.11
Potenza assorbita	Power	[W]	40 40

Consysta Automation GmbH
 D-55124 Mainz-Gonsenheim · Am Sägewerk 23a
 Tel. (0 61 31) 94 69-0 · Fax (0 61 31) 94 69-13

CAX 132 K 4-polig

DATI GENERALI - GENERAL DATA

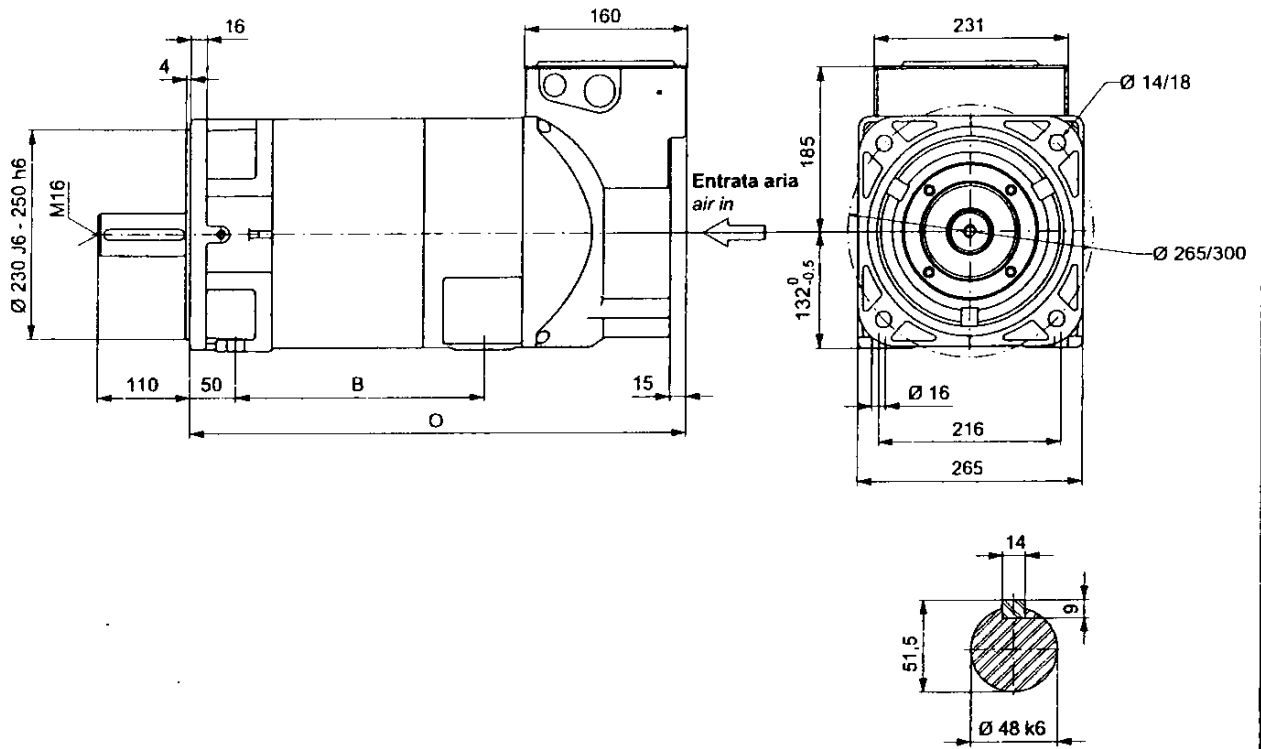
Forma costruttiva - Mounting	B3 - B3/B5 su richiesta B3/B5 on request	Isolamento - Insulation	Classe F - Class F
Equilibratura - Balancing	grado R - R degree (ISO 2373)	Raffreddamento - Cooling system	Vent. assiale forz. - Forced air cooled
Protezione - Protection	IP54	T. amb./Altitud. - Amb. temp./Altitud.	0 - 40°C/1000m SLM - 1000m AS
Protezione termica - Thermal prot.	Klixon NC (250V - 2.5A)	Trasduttore - Transducer	Encoder o Resolver - Encoder or Resolver

DATI TECNICI - TECHNICAL DATA

	SERVIZIO S1 - DUTY S1								SERV. S6/40% - DUTY S6/40%						
	VELOCITA' NOMINALE RATED SPEED	COPPIA NOMINALE RATED TORQUE	POTENZA NOMINALE RATED POWER	TENSIONE NOMINALE COD.38 RATED VOLTAGE COD.38	CORRENTE NOMINALE COD.38 RATED CURRENT COD.38	TENSIONE NOMINALE COD.33 RATED VOLTAGE COD.33	CORRENTE NOMINALE COD.33 RATED CURRENT COD.33	VELOCITA' MASSIMA A POTENZA COSTANTE MAXIMUM SPEED AT CONSTANT POWER	COPPIA NOMINALE RATED TORQUE	POTENZA NOMINALE RATED POWER	CORRENTE NOMINALE COD.38 RATED CURRENT COD.38	CORRENTE NOMINALE COD.33 RATED CURRENT COD.33	VELOCITA' MASSIMA A POTENZA COSTANTE MAXIMUM SPEED AT CONSTANT POWER	INERZIA ROTORE ROTOR INERTIA	VELOCITA' MASSIMA ASSOLUTA ABSOLUTE MAXIMUM SPEED
	RPM	Nm	KW	V	A	V	A	RPM	Nm	KW	A	A	RPM	Kgm ²	RPM
132K.1	1030	74	8.0	380	17.0	320	20.1	1900	104	11.2	23.8	28.1	1500	0.042	7500
	1570	70	11.5	380	23.7	320	27.8	2700	98	16.1	33.2	38.9	2000	0.042	7500
	2100	68	15.0	380	30.5	340	34.0	3400	95	21.0	42.7	47.6	2600	0.042	7500
	3110	57	18.5	380	39.0	315	47.0	4400	80	25.9	54.6	65.8	3600	0.042	7500
	4110	51	22.0	380	45.0	340	50.0	5700	72	30.8	63.0	70.0	4700	0.042	7500
132K.2	1030	102	11.0	380	22.0	325	26.0	2100	143	15.4	30.8	36.4	1500	0.056	7500
	1500	96	15.0	380	31.0	340	34.5	3000	134	21.0	43.4	48.3	2000	0.056	7500
	2040	94	20.0	380	41.0	320	48.0	3800	131	28.0	57.4	67.2	2500	0.056	7500
	3000	80	25.0	380	51.0	345	56.0	4700	111	35.0	71.4	78.4	3500	0.056	7500
	4030	71	30.0	380	61.0	330	70.0	5700	100	42.0	85.4	98.0	4500	0.056	7500
132K.3	990	120	12.5	380	25.2	350	27.5	2500	169	17.5	35.3	38.5	1700	0.067	7500
	1560	114	18.5	380	37.5	335	42.6	3600	158	25.9	52.5	59.6	2500	0.067	7500
	2130	112	25.0	380	50.0	350	54.0	3900	157	35.0	70.0	75.6	3100	0.067	7500
	3060	94	30.0	380	60.5	340	68	5000	131	42.0	84.7	95.6	3500	0.067	7500
	3830	85	34.0	380	69.0	320	82.0	6200	119	47.6	96.6	115	4500	0.067	7500
132K.4	990	154	16.0	380	32.0	340	36.0	2600	216	22.4	45.1	50.8	1800	0.104	7500
	1540	150	24.0	380	48.0	350	52.3	3900	209	33.5	67.2	73.2	2700	0.104	7500
	2100	145	32.0	380	66.0	340	74.0	4500	209	46.0	92.5	104	3200	0.104	7500
	2960	122	38.0	380	76.0	345	83.0	5200	172	53.2	106	116	4200	0.104	7500
	3670	117	45.0	380	90.0	340	100.0	6200	164	63.0	126	140	5000	0.104	7500
132K.5	1010	200	21.0	380	42.0	325	49.0	2700	278	29.4	58.8	68.8	1800	0.130	7500
	1640	190	32.5	380	65.0	340	73.0	4000	266	45.5	91.0	103	3000	0.130	7500
	2000	190	40.0	380	80.0	320	95.0	4400	265	56.0	112	133	3300	0.130	7500
	2660	170	47.0	380	96.0	340	106.0	4800	236	66.0	135	149	4100	0.130	7500
	3150	152	50.0	380	100.0	340	112.0	5200	212	70.0	140	157	4500	0.130	7500

Consysta Automation GmbH
 D-55124 Mainz-Gonsenheim · Am Sägewerk 23a
 Tel. (0 61 31) 94 69-0 · Fax (0 61 31) 94 69-13

CAX 132 K 4-polig



Motore - Motor	B	O	Peso Kg
132K.1	227	480	85
132K.2	272	525	102
132K.3	307	560	116
132K.4	377	630	143
132K.5	447	700	170

CUSCINETTI - BEARINGS

		Cuscinetto a sfere Ball bearing	Cuscinetto a rulli Roller bearing
Lato comando	Drive end	6310 2Z C3	-
Lato opposto comando	Opposite drive end	6308 2Z C3	-

VENTILATORE TRIFASE - THREE PHASE FAN

Alimentazione	Supply	[V]	3X 230Δ/400Y	
Frequenza	Frequency	[HZ]	50	60
Corrente	Current	[A]	0.35/0.20	0.35/0.20
Potenza	Power	[W]	90	110

Consysta Automation GmbH
 D-55124 Mainz-Gonsenheim · Am Sägewerk 23a
 Tel. (0 61 31) 94 69-0 · Fax (0 61 31) 94 69-13

CAX 160 L 4-polig

DATI GENERALI - GENERAL DATA

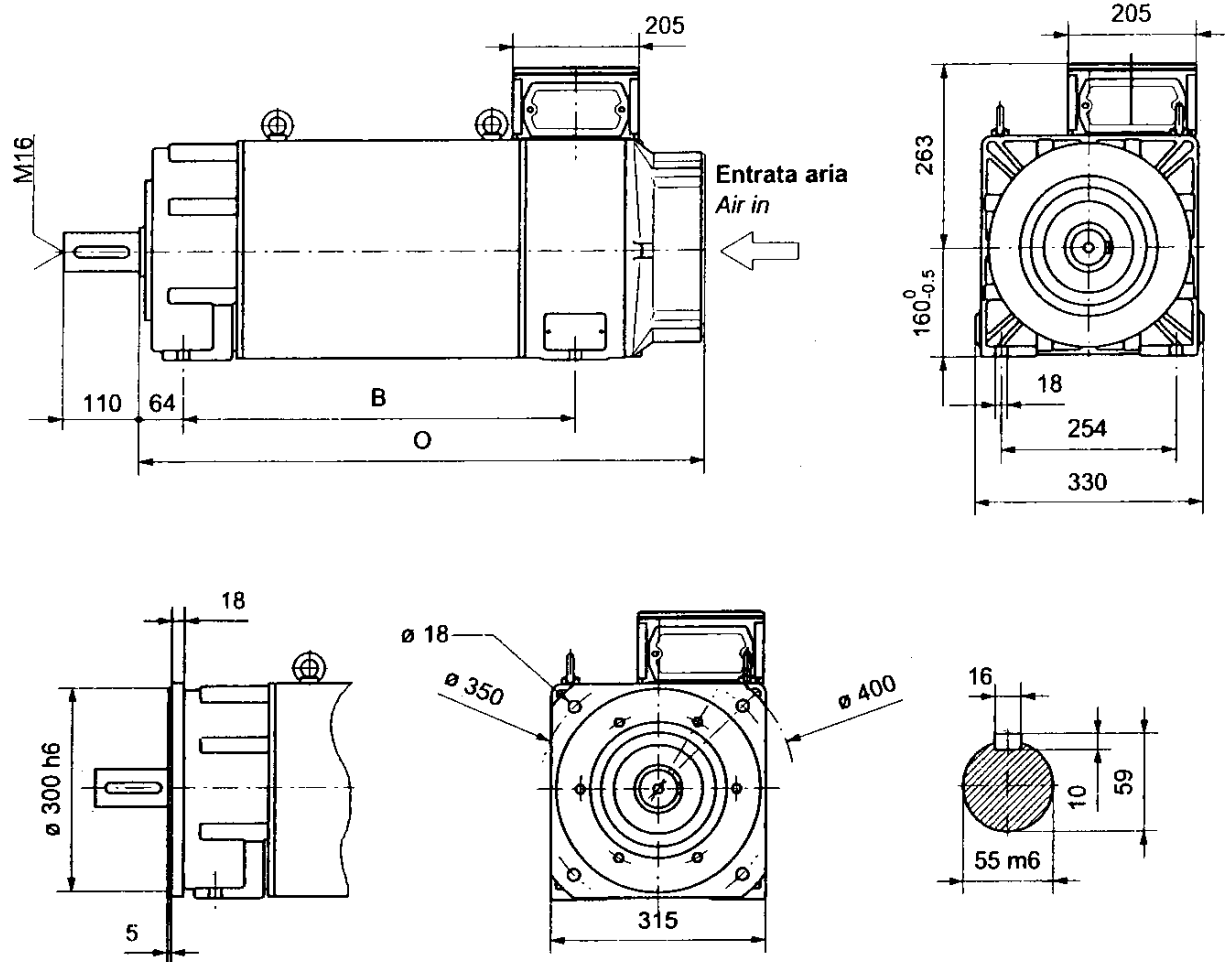
Forma costruttiva - Mounting	B3 - B3/B5 su richiesta B3/B5 on request	Isolamento - Insulation	Classe F - Class F
Equilibratura - Balancing	grado R - R degree (ISO 2373)	Raffreddamento - Cooling system	Vent. assiale forz. - Forced air cooled
Protezione - Protection	IP54	T. amb./Altitud. - Amb. temp./Altitud.	0 - 40°C/1000m SLM - 1000m AS
Protezione termica - Thermal prot.	Klixon NC (250V - 2.5A)	Trasduttore - Transducer	Encoder o Resolver - Encoder or Resolver

DATI TECNICI - TECHNICAL DATA

	SERVIZIO S1 - DUTY S1								SERV. S6/40% - DUTY S6/40%						
	VELOCITA' NOMINALE RATED SPEED	COPPIA NOMINALE RATED TORQUE	POTENZA NOMINALE RATED POWER	TENSIONE NOMINALE COD.38 RATED VOLTAGE COD.38	CORRENTE NOMINALE COD.38 RATED CURRENT COD.38	TENSIONE NOMINALE COD.33 RATED VOLTAGE COD.33	CORRENTE NOMINALE COD.33 RATED CURRENT COD.33	VELOCITA' MASSIMA A POTENZA COSTANTE MAXIMUM SPEED AT CONSTANT POWER	COPPIA NOMINALE RATED TORQUE	POTENZA NOMINALE RATED POWER	CORRENTE NOMINALE COD.38 RATED CURRENT COD.38	CORRENTE NOMINALE COD.33 RATED CURRENT COD.33	VELOCITA' MASSIMA A POTENZA COSTANTE MAXIMUM SPEED AT CONSTANT POWER	INERZIA ROTORE ROTOR INERTIA	VELOCITA' MASSIMA ASSOLUTA ABSOLUTE MAXIMUM SPEED
	RPM	Nm	KW	V	A	V	A	RPM	Nm	KW	A	A	RPM	Kgm ²	RPM
160L.1	850	210	18.5	380	39	345	42	1800	280	25	53	57	1400	0.21	6000
	1200	200	25	380	51	330	58	2600	270	34	70	79	1900	0.21	6000
	1500	195	30	380	61	320	72	3300	255	40	81	96	2400	0.21	6000
	2500	155	40	380	86	330	98	5000	205	54	116	133	3500	0.21	6000
	3000	145	46	380	97	345	107	6000	200	62	131	144	4000	0.21	6000
160L.2	780	260	21	380	43	340	48	1800	345	28	57	64	1300	0.25	6000
	1150	250	30	380	60	325	70	2400	335	40	82	96	1900	0.25	6000
	1500	240	37	380	73	345	81	3600	315	50	99	110	2500	0.25	6000
	2400	200	50	380	103	315	124	5000	270	68	140	169	3500	0.25	6000
	3000	180	56	380	117	345	128	6200	245	76	159	175	4100	0.25	6000
160L.3	800	310	26	380	53	330	61	2000	420	35	71	82	1500	0.31	6000
	1200	295	37	380	74	345	81	2600	400	50	100	110	2000	0.31	6000
	1500	290	45	380	89	340	100	3800	390	61	121	136	2700	0.31	6000
	2400	240	60	380	125	340	139	5000	325	81	169	188	3700	0.31	6000
	3100	215	70	380	147	330	168	6300	295	95	200	228	4300	0.31	6000
160L.4	780	370	30	380	61	325	72	2100	490	40	81	96	1500	0.36	6000
	1150	350	42	380	84	340	94	2700	475	57	114	128	2000	0.36	6000
	1650	330	57	380	115	345	126	4000	450	77	155	170	3000	0.36	6000
	2500	280	73	380	152	330	175	5300	380	99	206	237	2800	0.36	6000
	3000	255	80	380	168	325	197	6400	345	108	227	266	4300	0.36	6000

Consysta Automation GmbH
 D-55124 Mainz-Gonsenheim · Am Sägewerk 23a
 Tel. (0 61 31) 94 69-0 · Fax (0 61 31) 94 69-13

CAX 160 L 4-polig



Motore - Motor	B	O	Peso Kg
160L.1	400	690	215
160L.2	450	740	240
160L.3	510	800	275
160L.4	570	860	310

CUSCINETTI - BEARINGS

		Cuscinetto a sfere Ball bearing	Cuscinetto a rulli Roller bearing
Lato comando	Drive end	6312 2Z C3	NU 312
Lato opposto comando	Opposite drive end	6308 2Z C3	-

VENTILATORE TRIFASE - THREE PHASE FAN

Alimentazione	Supply	[V]	3X 220Δ/380Y	
Frequenza	Frequency	[HZ]	50	60
Corrente	Current	[A]	0.38/0.22	0.45/0.26
Potenza	Power	[W]	110	150

Consysta Automation GmbH
 D-55124 Mainz-Gonsenheim · Am Sägewerk 23a
 Tel. (0 61 31) 94 69-0 · Fax (0 61 31) 94 69-13

CAX 200 L 6-polig

DATI GENERALI - GENERAL DATA

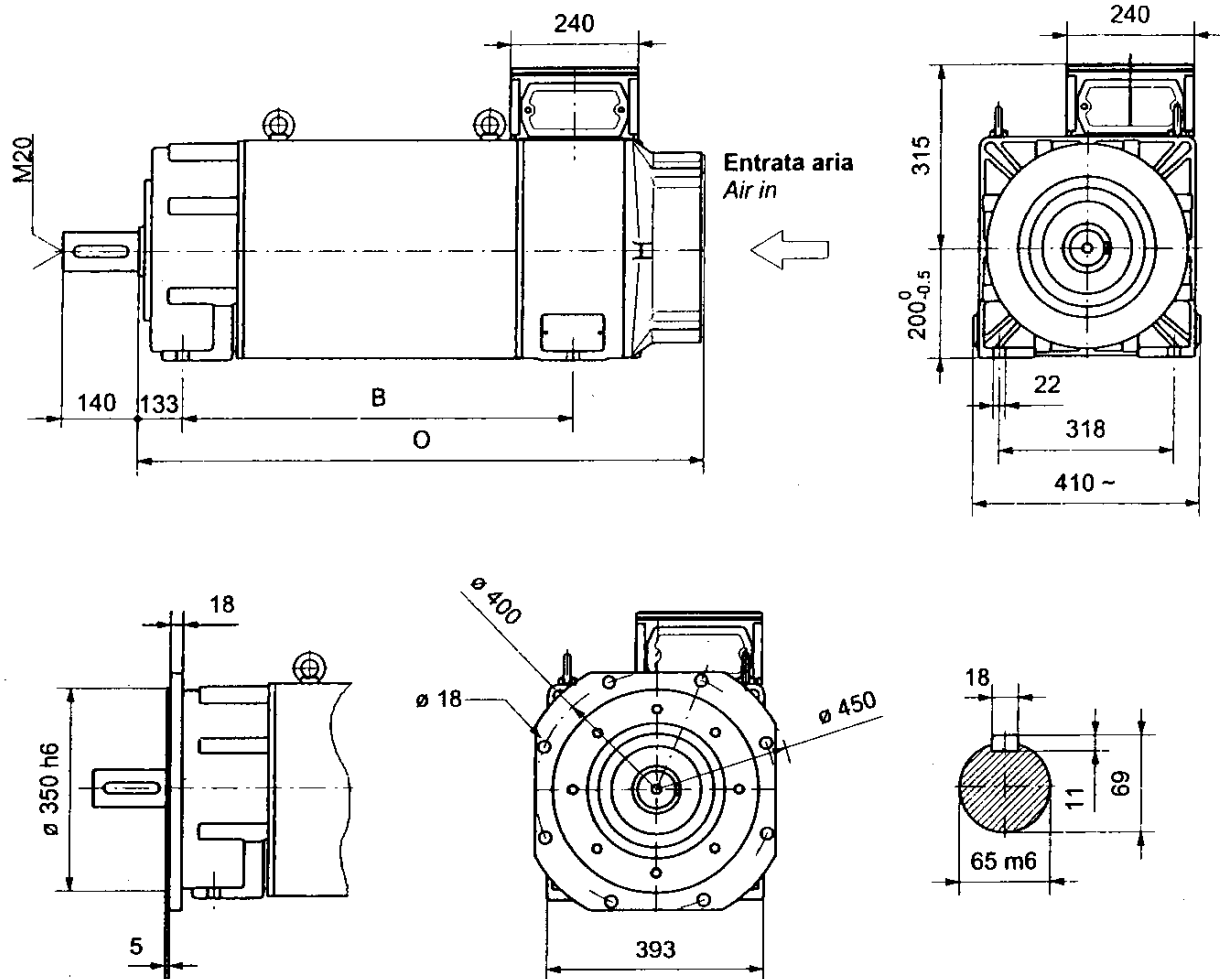
Forma costruttiva - Mounting	B3 - B3/B5 su richiesta B3/B5 on request	Isolamento - Insulation	Classe F - Class F
Equilibratura - Balancing	grado R - R degree (ISO 2373)	Raffreddamento - Cooling system	Vent. assiale forz. - Forced air cooled
Protezione - Protection	IP54	T. amb./Altitud. - Amb. temp./Altitud.	0 - 40°C/1000m SLM - 1000m AS
Protezione termica - Thermal prot.	Klixon NC (250V - 2.5A)	Trasduttore - Transducer	Encoder o Resolver - Encoder or Resolver

DATI TECNICI - TECHNICAL DATA

	SERVIZIO S1 - DUTY S1								SERV. S6/40% - DUTY S6/40%						
	VELOCITA' NOMINALE RATED SPEED	COPPIA NOMINALE RATED TORQUE	POTENZA NOMINALE RATED POWER	TENSIONE NOMINALE COD.38 RATED VOLTAGE COD 38	CORRENTE NOMINALE COD.38 RATED CURRENT COD.38	TENSIONE NOMINALE COD.33 RATED VOLTAGE COD.33	CORRENTE NOMINALE COD.33 RATED CURRENT COD.33	VELOCITA' MASSIMA A POTENZA COSTANTE MAXIMUM SPEED AT CONSTANT POWER	COPPIA NOMINALE RATED TORQUE	POTENZA NOMINALE RATED POWER	CORRENTE NOMINALE COD.38 RATED CURRENT COD.38	CORRENTE NOMINALE COD.33 RATED CURRENT COD.33	VELOCITA' MASSIMA A POTENZA COSTANTE MAXIMUM SPEED AT CONSTANT POWER	INERZIA ROTORE ROTOR INERTIA	VELOCITA' MASSIMA ASSOLUTA ABSOLUTE MAXIMUM SPEED
	RPM	Nm	KW	V	A	V	A	RPM	Nm	KW	A	A	RPM	Kgm ²	RPM
200L.1	770	375	30	380	63	330	73	1700	495	40	84	97	1200	0.55	5000
	1290	350	47	380	96	335	110	3000	465	63	129	148	1900	0.55	5000
	1620	340	57	380	116	320	137	3800	455	77	157	185	2300	0.55	5000
	2480	290	75	380	154	340	172	5000	385	100	205	230	3200	0.55	5000
	3270	250	85	380	174	345	192	5000	335	114	234	258	4000	0.55	5000
200L.2	770	435	35	380	69	325	82	2000	595	48	95	112	1300	0.63	5000
	1280	395	53	380	106	320	127	3200	540	72	144	173	2000	0.63	5000
	1560	385	63	380	124	340	137	3800	520	85	167	185	2300	0.63	5000
	2110	340	75	380	152	335	172	5000	455	100	203	230	2800	0.63	5000
	2930	295	90	380	185	340	205	5000	390	120	247	274	3700	0.63	5000
200L.3	770	510	41	380	84	330	96	2100	685	55	112	129	1400	0.75	5000
	940	510	50	380	102	345	112	2500	685	67	137	150	1700	0.75	5000
	1530	465	74	380	151	340	170	4100	625	100	204	230	2400	0.75	5000
	2030	425	90	380	183	330	210	4700	565	120	244	280	3000	0.75	5000
	2740	385	110	380	223	330	258	5000	510	146	300	342	3700	0.75	5000
200L.4	770	620	50	380	101	340	114	2250	840	67	135	153	1400	0.90	5000
	1050	575	63	380	129	340	143	2700	775	85	174	193	1800	0.90	5000
	1600	540	90	380	183	320	220	4300	720	120	244	293	2500	0.90	5000
	2050	490	105	380	208	345	230	5000	655	140	278	307	3000	0.90	5000
	2650	440	122	380	245	335	278	5000	595	165	331	376	3700	0.90	5000

Consysta Automation GmbH
 D-55124 Mainz-Gonsenheim · Am Sägewerk 23a
 Tel. (06131) 94 69-0 · Fax (06131) 94 69-13

CAX 200 L 6-polig



Motore - Motor	B	O	Peso Kg
200L.1	400	840	360
200L.2	440	880	400
200L.3	490	930	450
200L.4	560	1000	520

CUSCINETTI - BEARINGS

		Cuscinetto a sfere Ball bearing	Cuscinetto a rulli Roller bearing
Lato comando	Drive end	6314 2Z C3	NU 314
Lato opposto comando	Opposite drive end	6313 2Z C3	-

VENTILATORE TRIFASE - THREE PHASE FAN

Alimentazione	Supply	[V]	3X 220Δ/380Y
Frequenza	Frequency	[HZ]	50 60
Corrente	Current	[A]	1.18/0.68 1.26/0.73
Potenza	Power	[W]	310 355